



# **KES ENERGY**

YOUR **POWER PARTNER**

Piazza delle Fornaci, 4 – 36030 Villaverla- Italy

[www.kes-energy.it](http://www.kes-energy.it) [info@kes-energy.it](mailto:info@kes-energy.it)

tel. +39 0445 350756

## KES ENERGY ABOUT US



KES ENERGY is one of the industry leaders for electric generating sets. It provides complete power solutions from project development, production, installation, commissioning and service. Having a global network of partners, KES ENERGY can satisfy the needs of every client.

By applying our years of experience and constantly researching and using new technologies, KES ENERGY can offer a full range of highly efficient and reliable products. This includes the standard ranges as well as a completely customizable range of energy solutions that runs from 1 kVA to 3300 kVA.

NOT ONLY DIESEL; we offer solutions for gas and alternative energies as well, such as biogas, landfill gas and sewerage gas.

**YOUR POWER PARTNER**



Our core mission has always been the complete satisfaction of our clients. This is achieved by providing high quality products and services with the expertise of highly trained and motivated support staff.

Our focus on providing reliable ready-to-use products of utmost quality means that our clients know they can depend on us for all their independent energy producing needs.

Achieving customer satisfaction as a company as a whole; We feel that creating an environment that promotes the professional growth of our employees and staff contributes to the overall satisfaction of our customers and well-being of the company.

Having a global presence is extremely important to us as it allows us to quickly and efficiently respond to all of our customer's needs.

With locations strategically established throughout the world, we make sure we are always there when needed.



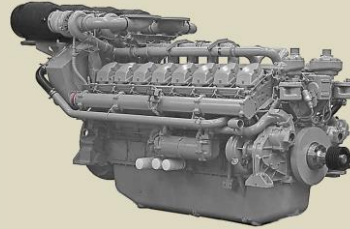
## DIESEL ENGINE BRANDS THAT KES ENERGY USES



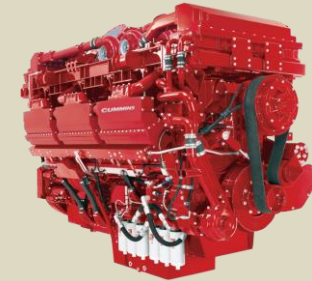
With a history stretching back more than 85 years, Perkins is one of the world's leading providers of diesel and gas engines. Perkins aims to set standards of engineering excellence, providing the most comprehensive range of innovative and reliable power solutions, tailored to meet the precise requirements of its customers.

Perkins is proud of its reputation as a socially responsible company, enhancing the lives not just of its employees but of the communities in which they work.

The Perkins mission statement sets out its business philosophy: 'We create value for our customers and distributors by providing competitive and dependable industrial power solutions.'



The Power Systems Segment is a global provider of high-speed high-horsepower engines and power generation equipment, including standby and prime power generator sets, alternators, switchgear and other components. Power Systems offers engines, power generation systems, components and services, and alternative-fuel electrical generators for use in residential standby, commercial industrial, mining, marine, rail, oil and gas, defense, data centers, telecom and healthcare applications and industries, to name a few. The Engine Segment designs and manufactures state-of-the-art diesel and natural gas powered engines for on-highway and off-highway use. The business also offers new parts and remanufactured parts and engines.



MTU systems power the largest yachts, the strongest tugboats and the biggest land vehicles and provide energy for the world's most important mission-critical applications. For over 110 years, it has provided innovative power solutions for its customers – meeting even the most demanding drive requirements. Through advanced solutions such as microgrids, MTU integrate renewable energies and manage the power needs of its customers.

MTU's customized service offerings help maximize uptime and performance and are supported by its digital solutions, which enable remote monitoring, predictive maintenance and a range of other benefits that keep your systems running at their best.

MTU products and services span a wide range of applications and power needs, with both standard and customized options.



The origins of Volvo Penta can be traced back as far as 1868. A somewhat humble beginning for a company that has become a world leader in diesel engines for marine and industrial use. Volvo Penta's global dealer network of approximately 3,500 dedicated dealers in 130 countries, service, support and sales representatives are always close at hand. Volvo Penta has wholly owned plants in Vara (Sweden) for manufacturing 3-, 4- and 5-liter diesel engines. The majority of Volvo Penta's diesel engines are manufactured at Volvo's common engine plant in Skövde, Sweden. Volvo Penta builds on its strong heritage, industrial and marine engineering expertise and our pioneering reputation to provide comprehensive business solutions that truly make a difference.



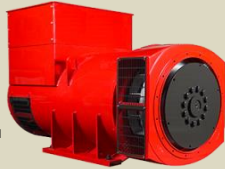
## ALTERNATOR BRANDS THAT KES ENERGY USES

### NEWAGE® | STAMFORD® | AvK®

Although their products are used in a variety of applications, the common factor is that Cummins Generator Technologies work to a single standard for both products and services no matter where you are in the world. With six manufacturing plants, based in Europe, Asia and India, it works to one global standard, so each of its plants build products to the same exacting quality that has come to distinguish their alternators in the industry.

All of their plants utilise the same sophisticated manufacturing technologies, advanced systems, common practices and rigorous testing techniques to ensure NEWAGE®, STAMFORD® and AvK® alternators are built to last.

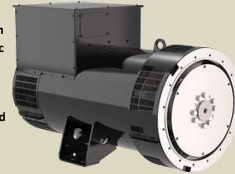
Cummins Generator Technologies is part of Cummins Inc. a global power leader and Fortune 500 corporation that designs, manufactures and distributes engines and related technologies, including fuel systems, controls, air handling, filtration, emission solutions and electrical power generation systems.



### LEROY-SOMER

Leroy-Somer Electric Power Generation, a business unit of the Nidec Group, is the global leader in industrial alternators with power ranging from 10kW to 25MW.

With its two leading brands, Leroy-Somer and Kato Engineering, Leroy-Somer Electric Power Generation works with generator set manufacturers and electric power producers worldwide to help the industry provide reliable and efficient power solutions. Leroy-Somer Electric Power Generation has over 5,000 employees, 10 production sites worldwide and a global service network.



### MarelliMotori

The company was founded in 1891 and nowadays enjoys worldwide brand recognition thanks to its extended sales, distribution and service networks across four continents and two manufacturing facilities, based in Italy and Malaysia, which produce technologically advanced products sold in more than 120 countries.

Marelli Motori provides electric rotating machines and a wide of aftersales services to six major market sectors: Power generation, Cogeneration, Industrial, Oil & Gas, Hydropower, Marine.

The ability to deliver long-lasting value to its customers and partners and expanding the applicability of its products in the marketplace have made them a major key player in today's energy business.



## CONTROL PANEL BRANDS THAT KES ENERGY USES

### DSE DEEP SEA ELECTRONICS

Deep Sea Electronics is one of the world's top manufacturers of generator controllers, auto transfer switch controllers, battery chargers and vehicle & off-highway controllers. They employ over 200 people across four continents and sell their products to 150 countries direct from the UK head office and through its comprehensive distributor network.

Throughout their 40-year history, they have invested heavily in people, processes and research & development to ensure DSE continues to enhance its reputation across world markets.

DSE has UK manufacturing and engineering facilities to be proud of. They develop and manufacture a range of over 140 different products that provide flexible control solutions for multiple applications.



### ComAp

ComAp designs and manufactures control products for power generation and engine control, along with associated accessories and software. They're leading the way in providing intelligent electronic control products and solutions that are highly flexible, intuitive, and scalable.

They ensure that they are connected with their customers so they receive world-class advice at every stage of the relationship, as well as unrivalled value through close collaboration. This allows them to fulfill their existing needs, as well as understand and meet their future requirements.

Continuous investment in their specialist global network enables them to maintain excellence in customer service, empowering their people and partners to deliver the highest standards of technical expertise, and local support to their customers across the world.



### DEIF

Green, safe and reliable control solutions for decentralised power production, marine & offshore and wind turbines.

All production facilities are located at the Danish HQ in Skive and a stunning 20% of their employees work in R&D identifying new environmentally friendly ways of increasing overall performance, reducing maintenance intervals and fuel consumption for the world's power generating industries.

Deif's purpose is to supply the world's best and most reliable control solutions. They make our planet greener by improving global energy efficiency.



## KES ENERGY DIESEL GENSETS BY 10 - 165 KVA STANDBY

POWER		KES ENERGY		ENGINE					SWITCH	DIMENSIONS			
STANDBY KVA	PRIME KVA	MODEL	MAKE	MODEL	GROSS POWER KWM	CYLINDERS NO.	DISPLACEMENT IT.	FUEL CONSUM.*	AMPS	OPEN CM**	OPEN KG	ENCLOSED CM**	ENCLOSED KG
10	9	KEPSW10	PERKINS	403D-11G	9.5	3	1.13	3.0	16	140x80x120	490	175x90x140	690
15	13	KEPSW15	PERKINS	403D-15G	13.5	3	1.5	3.7	20	140x80x120	535	175x90x140	755
17	15	KEPSW17	PERKINS	403A-15G2	15	3	1.5	5	20	140x80x120	560	175x90x140	770
22	20	KEPSW22	PERKINS	404D-22G	20.6	4	2.2	5.3	32	150x80x125	610	175x90x140	950
28	25	KECSW22	CUMMINS	X2.5-G2	22	3	2.5	6.0	40	170x80x125	665	175x90x140	865
33	30	KEPSW33	PERKINS	1103A-33G	31	3	3.3	8.6	50	170x80x130	845	190x90x150	1060
38	35	KECSW38	CUMMINS	X3.3-G1	36	4	3.3	8.5	50	170x80x125	715	190x90x150	1020
44	40	KECSW44	CUMMINS	S3.8-G4	43.4	4	3.8	9.9	63	170x80x125	890	190x90x150	1190
50	45	KEPSW50	PERKINS	1103A-33TG1	46.5	3	3.3	10.8	80	200x100x145	955	220x110x165	1255
55	50	KECSW55	CUMMINS	S3.8-G6	53.6	4	3.8	12.8	80	200x100x140	920	220x110x165	1235
66	61	KECSW66	CUMMINS	S3.8-G7	64.9	4	3.8	14.7	100	200x100x150	1035	220x110x165	1350
72	65	KEPSW72	PERKINS	1104A-44TG1	65.6	4	4.4	14.8	100	200x100x145	1160	220x110x165	1365
88	80	KEPSW88	PERKINS	1104A-44TG2	80.7	4	4.4	18.7	125	200x100x145	1195	220x110x165	1490
110	100	KEVSW110	VOLVO	TAD531GE	88	4	4.76	21.9	160	240x100x170	1340	290x110x165	1740
110	100	KECSW110	CUMMINS	6BTA5.9-G5	102	6	5.9	25	160	220x100x150	1245	190x110x150	1645
111	100	KEPSW111	PERKINS	1104C-44TAG2	103	4	4.4	26.9	160	200x100x145	1240	290x110x150	1645
144	130	KEVSW144	VOLVO	TAD532GE	113	4	4.76	21.6	250	240x100x170	1475	290x110x165	1890
150	135	KEPSW150	PERKINS	1106A-70TG1	135.8	6	7	30.2	250	245x110x170	1550	290x110x150	1940
150	136	KECSW150	CUMMINS	6BTA5.9-G6	145	6	5.9	35.16	250	240x110x170	1535	190x110x150	1940
165	150	KEPSW165	PERKINS	1106A-70TAG2	153.6	6	7	36.1	250	270x120x165	1690	350x125x185	2285
165	150	KEVSW165	VOLVO	TAD731GE	133	6	7.15	41	250	270x120x170	1685	350x125x185	2285

All power ratings listed at 50 Hz/1500 rpm/400Vac/3 Phase. Dimensions not to be used for installation purposes

\* Consumption listed as litres per hour in standby operation under standard conditions

\*\*Dimensions listed in Length x Width x Height format. Enclosed dimensions are listed as standard and can modified based on customers requirements (e.g. extra soundproofing, etc.)



## KES ENERGY DIESEL GENSETS BY 200 - 500 KVA STANDBY

POWER		KES ENERGY		ENGINE					SWITCH	DIMENSIONS			
STANDBY KVA	PRIME KVA	MODEL	MAKE	MODEL	GROSS POWER KWM	CYLINDERS NO.	DISPLACEMENT IT.	FUEL CONSUM.*	AMPS	OPEN CM**	OPEN KG	ENCLOSED CM**	ENCLOSED KG
200	180	KEPSW200	PERKINS	1106A-70TAG3	179.8	6	7	41.6	400	270x120x165	1790	350x125x185	2390
205	185	KEVSW205	VOLVO	TAD732GE	161	6	7.15	45.8	400	270x120x180	1810	350x125x185	2410
220	200	KECSW175	CUMMINS	QS87-G5	213	6	5.9	45	400	270x120x180	1645	350x125x185	2250
220	200	KEPSW220	PERKINS	1106A-70TAG4	196.3	6	7	45.8	400	270x120x165	1820	350x125x185	2410
225	205	KEVSW225	VOLVO	TAD733GE	179	6	7.15	59	400	270x120x180	1980	350x125x185	2580
225	200	KEPSW225	PERKINS	1206A-E70TTAG1	204.2	6	7	45.8	400	270x120x180	1895	390x145x185	2700
250	225	KEPSW250	PERKINS	1206A-E70TTAG2	226.1	6	7	51	400	270x120x180	1935	390x145x185	2730
275	250	KEVSW275	VOLVO	TAD734GE	241	6	7.15	56.9	400	270x120x180	2080	390x145x185	2880
275	250	KEPSW275	PERKINS	1206A-E70TTAG3	248.6	6	7	56.9	400	270x120x180	1950	390x145x185	2745
275	250	KECSW275	CUMMINS	QSL9-G3	257	6	8.8	59	400	300x140x185	2285	390x145x185	3085
300	275	KEPSW300	PERKINS	1506A-E88TAG4	267	6	8.8	60	630	300x135x180	2705	390x145x185	3530
330	300	KECSW330	CUMMINS	QSL9-G5	310	6	8.8	63	630	300x140x185	2495	390x145x185	3290
335	300	KEPSW335	PERKINS	1506A-E88TAG5	293	6	8.8	65	630	300x135x180	2830	390x145x185	3650
350	315	KEVSW350	VOLVO	TAD1341GE	298	6	12.78	68	630	305x140x185	3315	390x145x195	4115
375	350	KEVSW375	VOLVO	TAD1342GE	303	6	12.78	70	630	305x140x185	3385	390x145x195	4145
400	350	KEPSW400	PERKINS	2206C-E13TAG2	368	6	12.5	75	630	310x135x200	3250	440x145x225	4250
400	365	KECSW400	CUMMINS	NTA885-G4	351	6	14	76	630	310x135x200	3345	440x145x225	4350
410	378	KEVSW410	VOLVO	TAD1343GE	356	6	12.78	78	630	305x140x185	3445	390x145x195	4245
450	410	KEVSW450	VOLVO	TAD1344GE	389	6	12.78	81	630	310x140x185	3460	390x145x195	4260
450	400	KEPSW450	PERKINS	2206C-E13TAG3	413	6	12.5	85	630	310x135x200	3325	440x145x225	4330
500	450	KEVSW500	VOLVO	TAD1345GE	431	6	12.78	93	800	355x150x185	3505	390x145x195	4305
500	455	KEPSW500	PERKINS	2506C-E15TAG1	451	6	15.2	99	800	355x145x215	3785	440x145x225	4790

All power ratings listed at 50 Hz/1500 rpm/400Vac/3 Phase. Dimensions not to be used for installation purposes

\* Consumption listed as litres per hour in standby operation under standard conditions

\*\*Dimensions listed in Length x Width x Height format. Enclosed dimensions are listed as standard and can modified based on customers requirements (e.g. extra soundproofing, etc.)

## KES ENERGY DIESEL GENSETS BY 550 - 1106 KVA STANDBY

POWER		KES ENERGY		ENGINE					SWITCH	DIMENSIONS			
STANDBY KVA	PRIME KVA	MODEL	MAKE	MODEL	GROSS POWER KWM	CYLINDERS NO.	DISPLACEMENT IT.	FUEL CONSUM.*	AMPS	OPEN CM**	OPEN KG	ENCLOSED CM**	ENCLOSED KG
550	500	KEVSW550	VOLVO	TAD1641GE	473	6	16.12	100	800	355x150x215	3710	440x145x225	4910
550	500	KEPSW550	PERKINS	2506C-E15TAG2	495	6	15.2	106	800	355x145x215	3835	440x145x225	4835
550	500	KECSW550	CUMMINS	QSX15-G8	500	6	15	101	800	350x140x220	3800	440x145x225	4800
650	596	KEVSW650	VOLVO	TAD1642GE	554	6	16.12	115	1000	355x150x215	3995	440x145x225	5195
650	600	KEMSW650	MTU	12V1600G10F	524	12	21	117	1000	360x165x210	4230	440x145x225	5780
660	600	KEPSW660	PERKINS	2806A-E18TAG1A	593	6	18.1	123	1000	355x155x215	4445	500x165x237	5645
700	630	KEVSW700	VOLVO	TWD1643GE	596	6	16.12	125	1000	355x150x215	4745	500x165x237	5945
700	636	KECSW700	CUMMINS	VTA28-G5	612	12	28	140	1000	355x155x220	4650	500x165x237	5855
700	650	KEMSW700	MTU	12V1600G20F	576	12	21	129	1000	360x165x225	4375	500x165x237	5690
715	650	KEPSW715	PERKINS	2806A-E18TAG2	593	6	18.1	132	1000	355x155x215	4575	500x165x237	5780
770	700	KEVSW770	VOLVO	TWD1645GE	654	6	16.12	193	1250	365x150x220	5185	500x165x237	6385
825	750	KEPSW825	PERKINS	4006-23TAG2A	721	6	22.92	157	1250	385x175x220	5990	570x220x265	7225
850	770	KEPSW850	PERKINS	2806A-E18TAG5	743	6	18.1	162	1250	385x175x220	5100	570x220x265	6420
900	800	KEPSW900	PERKINS	4006-23TAG3A	786	6	22.92	172	1600	385x175x220	6105	570x220x265	7400
900	810	KECSW900	CUMMINS	QSK23-G3	768	6	23	161	1600	420x170x220	6310	570x220x265	7620
1000	910	KECSW1000	CUMMINS	QST30-G3	895	12	30.5	184	1600	455x200x220	6930	570x220x265	8225
1002	911	KEPSW1002	PERKINS	4008TAG1A	882	8	30.56	195	1600	480x190x220	7155	640x235x280	9355
1005	910	KEMSW1005	MTU	16V2000G16F	806	16	35.7	186	1600	445x200x225	6990	606x244x259	9850
1100	1000	KECSW1100	CUMMINS	KTA38-G5	970	12	37.8	209	1600	450x180x225	8605	640x235x280	10210
1106	1005	KEMSW1106	MTU	16V2000G26F	890	16	35.7	205	1600	455x200x225	7680	606x244x259	9970

All power ratings listed at 50 Hz/1500 rpm/400Vac/3 Phase. Dimensions not to be used for installation purposes

\* Consumption listed as litres per hour in standby operation under standard conditions

\*\*Dimensions listed in Length x Width x Height format. Enclosed dimensions are listed as standard and can modified based on customers requirements (e.g. extra soundproofing, etc.)

**KES ENERGY DIESEL GENSETS BY 1120 - 3355 KVA STANDBY**

POWER		KES ENERGY		ENGINE					SWITCH	DIMENSIONS			
STANDBY KVA	PRIME KVA	MODEL	MAKE	MODEL	GROSS POWER KWM	CYLINDERS NO.	DISPLACEMENT IT.	FUEL CONSUM.*	AMPS	OPEN CM**	OPEN KG	ENCLOSED CM**	ENCLOSED KG
1120	1000	KECSW1120	CUMMINS	QST30-G4	970	12	30.5	202	1600	425x200x235	7290	640x235x280	9470
1125	1022	KEPSW1125	PERKINS	4008TAG2A	985	8	30.56	215	1600	480x190x220	7295	640x235x280	9500
1250	1125	KEPSW1250	PERKINS	4008-30TAG3	1055	8	30.56	244	2000	490x210x220	9190	640x235x280	11395
1254	1135	KEMSW1254	MTU	16V2000G36F	1000	16	35.7	231	2000	460x185x245	8050	606x244x259	10560
1370	1250	KEMSW1370	MTU	18V2000G26F	1102	18	40.2	251	2000	520x190x255	10550	606x244x259	13440
1385	1250	KEPSW1385	PERKINS	4012-46TWG2A	1224	12	45.84	259	2000	485x180x235	9680	800x240x310	12090
1400	1275	KECSW1400	CUMMINS	KTA50-G3	1227	16	50.3	261	2000	560x200x240	11190	606x244x259	14090
1500	1364	KEPSW1500	PERKINS	4012-46TWG3A	1321	12	45.84	283	2500	510x190x245	10305	800x240x310	12765
1656	1505	KEPSW1656	PERKINS	4012-46TAG2A	1459	12	45.84	310	2500	510x220x270	11320	800x240x310	13420
1675	1400	KECSW1675	CUMMINS	KTA50-G8	1429	16	50.3	289	2500	560x200x240	11230	606x244x259	14130
1815	1650	KEMSW1815	MTU	12V4000G14F	1420	12	57.2	324	3200	510x220x270	12100	1219x244x289	16600
1880	1710	KEPSW1880	PERKINS	4012-46TAG3A	1643	12	45.84	370	3200	525x220x270	11935	800x240x310	14345
2000	1850	KEPSW2000	PERKINS	4016-61TRG1	1774	16	61.1	384	3200	565x225x265	13515	1219x244x289	18015
2028	1844	KEPSW2028	PERKINS	4016TAG1A	1741	16	61.1	391	3200	555x235x295	14665	1219x244x289	19165
2035	1850	KEMSW2035	MTU	12V4000G24F	1500	12	57.2	365	3200	500x200x255	12900	1219x244x289	19465
2080	1890	KECSW2080	CUMMINS	QSK60-G3	1790	16	60.2	371	3200	600x250x280	13950	1219x244x289	18450
2250	2000	KEPSW2250	PERKINS	4016-61TRG2	1985	16	61.1	405	3200	605x220x255	13805	1219x244x289	18305
2250	2045	KECSW2250	CUMMINS	QSK60-G4	1915	16	60.2	394	3200	600x250x280	14205	1219x244x289	18705
2263	2058	KEPSW2263	PERKINS	4016TAG2A	1937	16	61.1	447	3200	555x235x295	15225	1219x244x289	19725
2300	2100	KEMSW2300	MTU	16V4000G14F	1798	16	76.3	408	4000	615x235x310	15550	1219x244x289	20050
2500	2250	KEPSW2500	PERKINS	4016-61TRG3	2183	16	61.1	470	4000	610x230x300	14255	1219x244x289	18755
2530	2300	KEMSW2530	MTU	16V4000G24F	1965	16	76.3	472	4000	615x235x310	16000	1219x244x289	20550
2805	2550	KEMSW2805	MTU	20V4000G14F	2200	20	95.4	509	5000	670x235x280	19350	1219x244x289	23850
3000	2750	KECSW3000	CUMMINS	QSK78-G9	2539	18	77.6	528	5000	650x200x275	19000	1219x244x289	23500
3080	2800	KEMSW3080	MTU	20V4000G24F	2420	20	95.4	575	5000	670x235x280	19560	1219x244x289	24050
3355	3050	KEMSW3355	MTU	20V4000G34F	2590	20	95.4	600	5000	670x235x280	21000	1219x244x289	25500

All power ratings listed at 50 Hz/1500 rpm/400Vac/3 Phase. Dimensions not to be used for installation purposes

\* Consumption listed as litres per hour in standby operation under standard conditions

\*\*Dimensions listed in Length x Width x Height format. Enclosed dimensions are listed as standard and can modified based on customers requirements (e.g. extra soundproofing, etc.)





# NATURAL GAS GENSET BRANDS THAT KES ENERGY USES



Cat gas compression engines are the prime movers for gas lift, gas gathering, wellhead gas compression, pipeline compression, storage, gathering, and re-injection. Caterpillar provides the widest power range and fuel and lowest owning and operating costs in the industry.



Over 50 years of experience and development goes into every Cummins natural gas engine. The result is superior uptime, durability and performance in compression, generator and pump drivers.

Naturally aspirated and turbocharged natural gas engines are available across a wide range of ratings.

To get the most from your Cummins natural gas engine, set up the engine according to the site specific conditions, including gas quality, ambient temperatures and elevation.



MTU gas-powered generator sets provide you with a continuous, economical, reliable and sustainable source of power. Utilizing natural gas, biogas or other gases, MTU generator sets feature cutting-edge technology that provide combined heat and power (CHP), as well as combined heat, power and cooling (CHPC) solutions. All of MTU gas gensets combine the highest performance with the lowest emissions.



GAS POWER OUTPUT OF



## CATERPILLAR GAS POWER RANGE

STANDBY	175-400 KVA
CONTINUOUS	280-10300 KWE

## CUMMINS GAS POWER RANGE

CONTINUOUS	315-2000 KWE
------------	--------------

## MTU GAS POWER RANGE

CONTINUOUS	128-2535 KWE
------------	--------------



All data subject to change without prior notice  
 Piazza delle Fornaci, 4 – 36030 Villaverla (Vi) Italy tel. +39 0445 350756 www.kes-energy.it info@kes-energy.it

# KES ENERGY CONTAINER POWER STATION



Kes Energy containers are used for containment and the soundproofing of generators. They are prepared and assembled inside the company, therefore it left open the possibility to personalize the project to allow the adjustment of the finished product to the requirements or specifications of the customer. Main features: robust, versatile, suitable for road transport, transport by sea and rail.

Both the internal configuration of the container and the external devices are defined from time to time according to the specific needs of the customer. During the offer Kes Energy provide a standard layout of the container construction. When ordering, Kes Energy carries out an accurate study based on the data supplied by the customer. Through the preparation of a preliminary design the following will be highlighted:

- The locations of different equipment inside the container
- The number and position of the doors
- The size and position of the openings for the air
- The size and position of the internal separation walls appropriate to the creation of rooms dedicated to the segregation of the panels or other accessories
- The number and position of technical passages
- The general overall dimensions

The containers, having dimensions equal to 20', 20'HC, 40' and 40'HC, can be supplied with the RINA certificate that allows the transport of the containers by sea on container vessels. Without the RINA certificate the navel transport companies handles the containers as boxes, resulting in higher shipping costs.

All technical passages are dimensioned and protected according to the specific needs of the customer. The following is possible: sleeves for the passage of the fuel pipes, niches for emergency button, control panel of GS, tear valve, anti-fire control unit if requested, passages for power and auxiliary cables.

Compatibly with the available internal spaces it is possible to install additional tanks, fuel refilling system, fuel tank, transfer switch panel and many other accessories. The residual noise level for the container type "light" is more than 75dB(A), measured in open field. For the container "soundproof" the basic noise level is 75dB(A). There are available solutions with more soundproof, 65dB(A) and 55dB(A). In order to ensure solutions compact as much as possible, the silencers are preferably installed inside the container as often as is physi-cally possible. Only when no other solution is possible it will be installed externally, on the top of the container.

Depending on the power of the Generating Set, the silencer installed on the top will be suitable soundproof if it is necessary to obtain a noise levels of 60/65dB(A) and 55dB (A) at 7m.

Depending on the required motor type and the specific needs of the customer, the dimensions of the containers may vary, therefore the power data (kVA) associated with the dimensions of the containers are purely indicative.

Model	Dimensions mm (LxWxH)	Noise Level at 7m- dBA	Genset range (kVA)	
KESCONT55-10	10'	2990 x 2438 x 2591	55	50 - 100
KESCONT75-15	15'	4550 x 2438 x 2591	75	105 - 250
KESCONT65-15	15'	4550 x 2438 x 2591	65	105 - 250
KESCONT55-15	15'	4550 x 2438 x 2591	55	105 - 250
KESCONT75T-20	20'	6058 x 2438 x 2591	>75	650 - 1000
KESCONT75-20	20'	6058 x 2438 x 2591	75	650 - 800
KESCONT75-20HC	20' HC	6058 x 2438 x 2896	75	650 - 800
KESCONT65-20HC	20' HC	6058 x 2438 x 2896	65	650 - 800
KESCONT55-20HC	20' HC	6058 x 2438 x 2896	55	275 - 630
KESCONT75T-30	30'	9125 x 2438 x 2591	>75	900 - 1000
KESCONT75-30	30'	9125 x 2438 x 2591	75	900 - 1000
KESCONT65-30	30'	9125 x 2438 x 2591	65	900 - 1000
KESCONT75T-30HC	30'HC	9125 x 2438 x 2896	>75	1250 - 3000
KESCONT75T-40	40'	12192 x 2438 x 2591	>75	900 - 1000
KESCONT75-40	40'	12192 x 2438 x 2591	75	900 - 1000
KESCONT65-40	40'	12192 x 2438 x 2591	65	900 - 1000
KESCONT75-40HC	40' HC	12192 x 2438 x 2896	75	1250 - 3000
KESCONT65-40HC	40' HC	12192 x 2438 x 2896	65	1250 - 3000



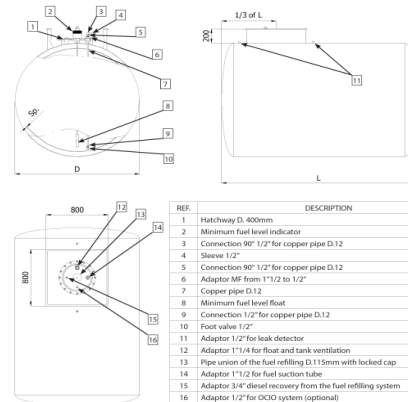
All data subject to change without prior notice  
Piazza delle Fornaci, 4 – 36030 Villaverla (VI) Italy tel. +39 0445 350756 www.kes-energy.it info@kes-energy.it

# KES ENERGY POWER TRANSFER AND FUEL TANKS



SWITCH	KES ENERGY	CONTROLLER	GENSET POWER
AMPS	MODEL	STANDARD	OUTPUT RANGE
16	KESATS16	DSE 333	10 KVA
20	KESATS20	DSE 333	15-17 KVA
32	KESATS32	DSE 333	22 KVA
40	KESATS40	DSE 333	28 KVA
50	KESATS50	DSE 333	33-38 KVA
63	KESATS63	DSE 333	44 KVA
80	KESATS80	DSE 333	50-55 KVA
100	KESATS100	DSE 333	66-72 KVA
125	KESATS125	DSE 333	88 KVA
160	KESATS160	DSE 333	110-111 KVA
250	KESATS250	DSE 333	144-165 KVA
400	KESATS400	DSE 333	200-275 KVA
630	KESATS630	DSE 333	300-450 KVA
800	KESATS800	DSE 333	500-550 KVA
1000	KESATS1000	DSE 333	650-700 KVA
1250	KESATS1250	DSE 333	770-850 KVA
1600	KESATS1600	DSE 333	900-1125 KVA
2000	KESATS2000	DSE 333	1250-1400 KVA
2500	KESATS2500	DSE 333	1500-1675 KVA
3200	KESATS3200	DSE 333	1815-2263 KVA
4000	KESATS4000	DSE 333	2300-2530 KVA
5000	KESATS5000	DSE 333	2805-3355 KVA

KES ENERGY		CAPACITY	DIAMETER x LENGTH	WEIGHT
DESCRIPTION	MODEL	LITERS	MM	KG
DOUBLE WALL FUEL TANK WITH VALVE	KESTANK1000	1000	1000x1780	405
DOUBLE WALL FUEL TANK WITH VALVE	KESTANK1500	1500	1200x1780	520
DOUBLE WALL FUEL TANK WITH VALVE	KESTANK2000	2000	1350x1780	610
DOUBLE WALL FUEL TANK WITH VALVE	KESTANK3000	3000	1500x2050	865
DOUBLE WALL FUEL TANK WITH VALVE	KESTANK4000	4000	1350x3260	990
DOUBLE WALL FUEL TANK WITH VALVE	KESTANK5000	5000	1500x3310	1550
DOUBLE WALL FUEL TANK WITH VALVE	KESTANK6000	6000	1700x3310	1300
DOUBLE WALL FUEL TANK WITH VALVE	KESTANK8000	8000	1900x3440	1545
DOUBLE WALL FUEL TANK WITH VALVE	KESTANK10000	10000	2100x3500	1820
DOUBLE WALL FUEL TANK WITH VALVE	KESTANK12000	12000	2100x4250	2095
DOUBLE WALL FUEL TANK WITH VALVE	KESTANK15000	15000	2100x5000	2465
DOUBLE WALL FUEL TANK WITH VALVE	KESTANK20000	20000	2100x6500	3160



REF.	DESCRIPTION
1	Hatchway D. 400mm
2	Minimum fuel level indicator
3	Connection 90° 1/2" for copper pipe D.12
4	Sleeve 1/2"
5	Connection 90° 1/2" for copper pipe D.12
6	Adaptor MF from 1" 1/2" to 1/2"
7	Copper pipe D.12
8	Minimum fuel level float
9	Connection 1/2" for copper pipe D.12
10	Foot valve 1/2"
11	Adaptor 1/2" for leak detector
12	Adaptor 1" 1/4 for float and tank ventilation
13	Pipe union of the fuel refilling D.115mm with locked cap
14	Adaptor 1" 1/2 for fuel suction tube
15	Adaptor 3/4" diesel recovery from the fuel refilling system
16	Adaptor 1/2" for OCHO system (optional)



All data subject to change without prior notice  
 Piazza delle Fornaci, 4 – 36030 Villaverla (Vi) Italy tel. +39 0445 350756 www.kes-energy.it info@kes-energy.it

**Head  
Office**

Kes Energy  
Piazza delle Fornaci, 4  
36030 Villaverla  
Italy

[info@kes-energy.it](mailto:info@kes-energy.it)

tel. +39 0445 350756

fax +39 0445 350756

**Dubai  
Office**

Kes Energy LLC  
Sheikh Zayed Road, Business Bay  
Fifty One @Business Bay, Office #0607  
Dubai  
United Arab Emirates

[infodubai@kes-energy.it](mailto:infodubai@kes-energy.it)

tel. +971 4 368 8669

fax +971 4 368 8679

**Sales**

[sales@kes-energy.it](mailto:sales@kes-energy.it)

**Service**

[technical@kes-energy.it](mailto:technical@kes-energy.it)

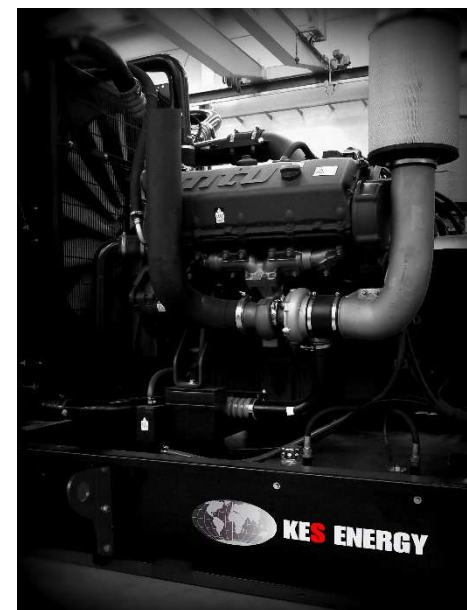
**Export**

[export@kes-energy.it](mailto:export@kes-energy.it)



**KES ENERGY**

**YOUR POWER PARTNER**



[www.kes-energy.it](http://www.kes-energy.it)

Copyright© 2020 by Kes Energy

All rights reserved. Reproduction or dissemination is strictly prohibited without prior written consent from Kes Energy.